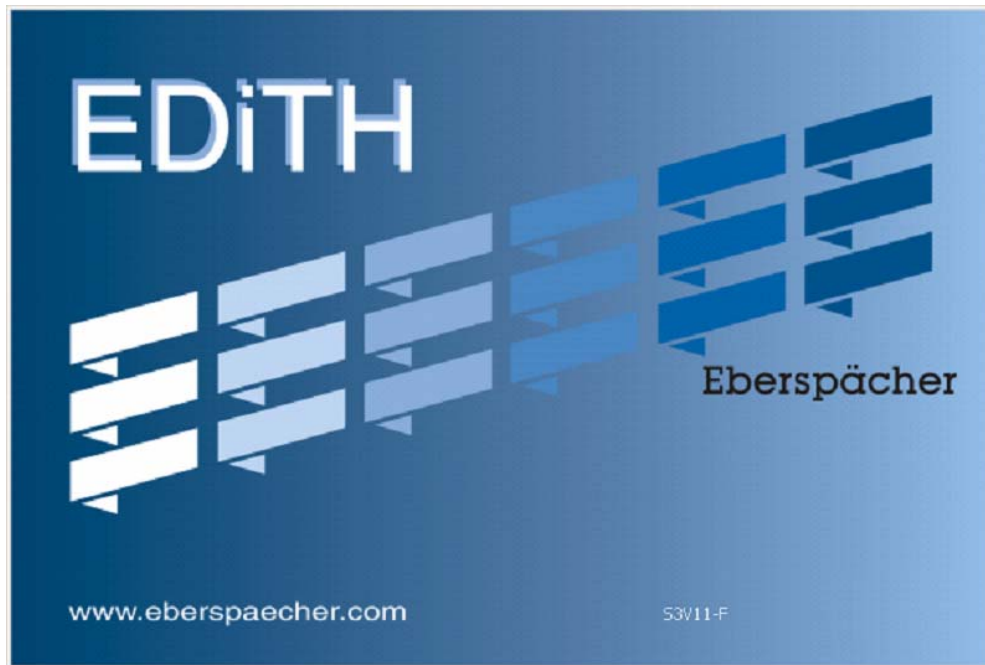


## Getting Started With EDiTH



### Computerized diagnostic with EDiTH and ISO adapter

In order to use advanced technology for heater diagnostic, ESPAR recommends to use computerized diagnostics everywhere where possible, which allows you to have more detailed information needed for troubleshooting. With computerized diagnostics you also have an option to easily share the recorded file with ESPAR specialist using E-mail. EDiTH diagnostic is required for submitting warranty claims.

Following items are needed for computerized diagnostics of heaters:

Tools	
ISO adapter with USB-to-Serial adapter and VISTA/7 compatible EDiTH software p/n 22 1541 89 00 00	Prior to installing software, check if a newer version or software update is available for download (please see below)
Optional: Approved USB-to-Serial adapter with driver and VISTA/7 compatible EDiTH software, p/n 22 1543 89 00 00	Needed if no serial port is available on computer. Does not include ISO adapter.
<b>EDiTH software</b> for Windows 98 and up, including Windows VISTA and Windows 7*: <a href="http://www.espar.com/tech_manuals/Diagnostic%20Software/">http://www.espar.com/tech_manuals/Diagnostic%20Software/</a> *See note for VISTA users below	English and French versions are available for download free of charge for use with ISO adapter and with EDiTH Expert Adapter (ECU testing unit, special tool for heater repair centers).  <b>Current version of software is EDiTH S3V11-F</b>

<b>Adapter cables</b> (only one appropriate adapter is needed for each kind of installation)		
Part #	Used with	Comment
22 1000 30 6900	B/D1/LCCompact B/D3/LCCompact	Y-cable. Works with all “Compact” heaters.
20 2900 70 5046	Airtronic 2-4-5 Hydronic M-II series heaters 8-10-12 kW	Cable with two connectors. Use for installations with black 8-pin diagnostic connector (optional, otherwise remove spiral cable from ISO adapter and plug adapter directly to diag. connector on harness)
22 1000 31 8600	Airtronic 2-4-5	Use if no diagnostic connectors installed.
20 2900 70 5028	Hydronic 4/5	Y-cable.
25 2786 70 0001	Hydronic 4/5 Freightliner Cascadia	Y-cable. Can be used only with Hydronic 5 factory installed on Freightliner Cascadia trucks starting 2009. Not compatible with other cables.
22 1000 31 6300	Hydronic 4/5 Z	Y-cable with switchbox. May also be used for other Hydronic 4/5 heaters.
22 1000 33 3100	Airtronic 2-4-5 and Hydronic 4/5	Use only when High Altitude Sensor p/n 22 1000 33 22 00 is used (H-Kit). Do not use other adapters with H-Kit 22 1000 33 22 00 or remove sensor while use other adaptors (sensor will not be tested in this case)
20 2900 70 5031	D8LC	Y-cable with round connectors, not compatible with Hydronic 10
20 2900 70 5030	Hydronic 10	Y-cable with round connectors, not compatible with D8LC
20 2900 70 5044	Hydronic 10/M	Y-cable with square connectors, not compatible with Hydronic M-II series heaters
25 2800 70 1004	Hydronic M-II series heaters 8-10-12 kW	Y-cable. Use for installations without diagnostic connector. Not compatible with earlier versions of Hydronic M.
22 1000 31 66 00	Hydronic 16/24/30/35	H-cable

ISO adapter requires a computer with serial port (RS232). On computers with no serial port available, Serial-to-USB adapter can be used. Use only USB 2.0 adapters as ISO adapter is not compatible with USB 1.1 serial-to USB adapters. Recommended adapter is listed in the table above; it is also included with ISO adapter package.

### **Diagnosis software EDiTH S3V11-F:**

The latest diagnostic software EDiTH is available for download at ESPAR service portal, ([www.espar.com/help/](http://www.espar.com/help/) => *Diagnostic Software*).

The software is available in the following languages: English, French, German, Italian, and Russian.

Currently version S3V11-F does not require installing of database update file.

The following modifications have been made at version S3V11-F:

#### Operating system:

- Software now runs under Windows 7 environment and earlier versions of MS Windows
- For installation and proper operation of EDiTH S3V11-F under Windows 7, please consider these requirements:
  - to use the software, user rights are required
  - administrator rights are required if using the USB-to–Serial adapter which is included with ISO adapter
  - the USB driver will be installed with the EDiTH software by choosing the interface.
  
- Some requirements for operation under Windows 7(/Windows Vista):
  - o . Serial interface: COM1, COM2, COM3 or higher; or USB interface with USB serial adapter
  - o . If using the USB interface all energy settings for the USB interface must be deactivated

#### Heater test:

- Several OEM/universal heater versions have been added into the data base:
- Newer heaters are automatically recognized
- S3LII OEM variants parking heater and pre-heater
- Message window “start engine“ have been added without check if the engine really have been started

### **Installation notes**

Download Zipped folder from [www.espar.com/help/](http://www.espar.com/help/) (subfolder for Diagnostic Software) or from [www.espar.com/tech\\_manuals/Diagnostic Software](http://www.espar.com/tech_manuals/Diagnostic_Software) The zip folder files are about 19MB. After downloading the file, which may take some time and some browsers do not indicate download progress during the process, copy the content of zipped folder into a special folder and run EDiTH Setup.exe. All previous versions of EDiTH must be removed from computer prior to installation of EDiTH S3V11-F

If you do not previously unpack the content of the zipped folder, the program will ask if you wish to Extract all or Run. Choose Extract all, then Run EDiTH setup.

Running Setup on some computers, you may have RS232 option disabled even if the computer has available serial port. In this case choose USB, install EDiTH, run it and change communication setting to an available COM port.

You may check existence and assigned port # of the serial (RS232) port using Windows Device Manager. Make sure that existing port does not belong to modem or not used by other applications.

#### **Problem extracting files from Zipped Folder**

You may experience a problem extracting files from Zipped Folder if you have expired trial version of WinZip. In this case right click the zipped folder and choose “Open with compressed (zipped) folders”

## Specific information for Windows Vista / 7

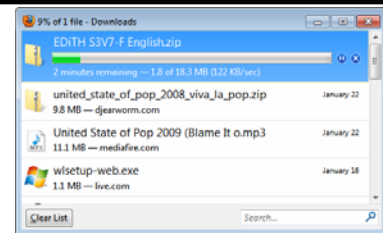
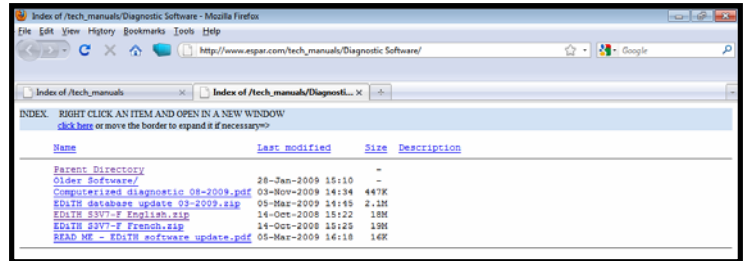
### Step 1

-Using your internet browser of choice, navigate to:

[http://www.espar.com/tech\\_manuals/Diagnostic Software/](http://www.espar.com/tech_manuals/Diagnostic Software/)

-‘Click’ on the most current version of the EDiTH software

-Follow the prompts that appear in order to download the software



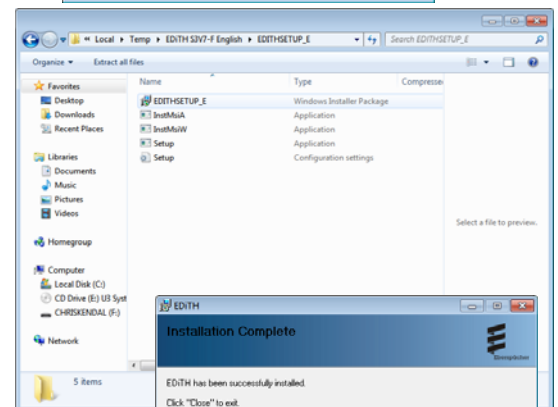
### Step 2

-Once the download has completed, navigate to the location where the download was saved.

-‘Click’ on the setup file

-follow the on screen prompts for EULA, saving location and confirmation of installation

-Windows Security will prompt several times during installation asking for permission to install the software. Click ‘Allow’.



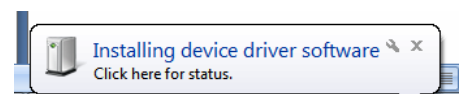
### Step 3

-Open the start menu and launch EDiTH



### Step 4

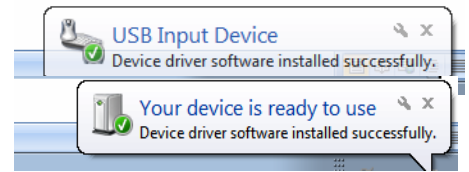
-Minimize the EDiTH screen



-If using a Serial to USB convertor plug it into the computer now(don't connect the cable to the ISO adapter yet)

-Windows Vista / 7 should recognize the Serial to USB adapter and automatically install the required driver. If you receive a message stating that the driver was unsuccessfully installed please see the troubleshooting section at the end of this tutorial.

-Unplug the adapter.



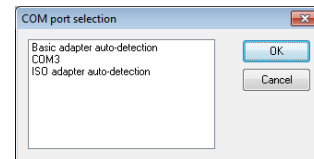
#### Step 5

-Maximize the EDiTH screen

-'Click' Ok on the EDiTH flash screen

- You may be prompted to make a COM port selection, pick one it doesn't matter at this point.

- Make a mental note as to which ports are displayed (COM3, in this case)



just

#### Step 6

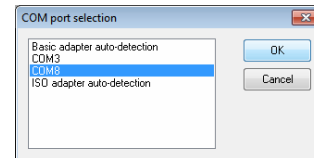
-Plug the Serial to USB interface back into the computer.

-You may see the messages from step 4 again this is

-At the top of the screen there is a menu option called "Options", 'Click' it. Then select Serial Interface.

-You should now see another option for available COM (COM 8 in this case). Highlight it and select 'OK'.

-Close EDiTH



normal

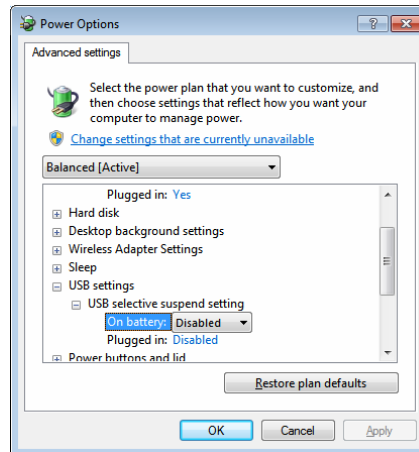
ports

#### Step 7

-Navigate to Control Panel > Hardware and sound Power options 'Click' on the text "Change plan settings".

-'Click' on the text "Change advanced power settings"

- Ensure that the 'USB selective Suspend' is disabled by clicking on the highlighted text



>

#### Step 8

-Plug the Serial to USB cable into the ISO adapter

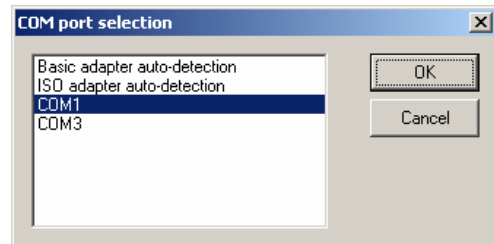
-Connect the ISO adapter to the Heater to be worked on

## Basic Setup

Communications setup is fairly straightforward. Select the correct Com port under the 'Options' menu bar and select 'Serial interface'.

In the selection box that appears, select the communications port that corresponds to the port in which the ISO adapter is connected (White Box).

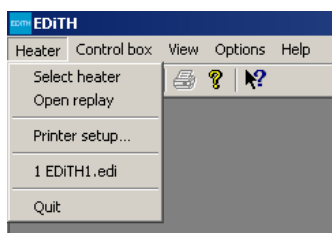
\*Note: If you receive this message, either you selected the incorrect com port or the USB to serial adapter has been configured improperly.



If you have any problems getting communications to work correctly, contact your system administrator to check if you have available COM port on your system. Some computers may have installed software that unnecessary occupies existing COM port and makes it unavailable for other programs. Another reason for having communication problem is using USB-to Serial adapter without properly installed driver. In the last case the COM port is not listed in Device Manager (right click My Computer => Properties => Hardware => Device Manager). If Serial-to-USB adapter is used, it is usually easy to see if it is properly configured by simply unplugging replugging it into USB port and seeing which COM port disappears/appears in the Device Manager. Use the same port # in EDiTH communication setup.

## Using EDiTH with Airtronic D2

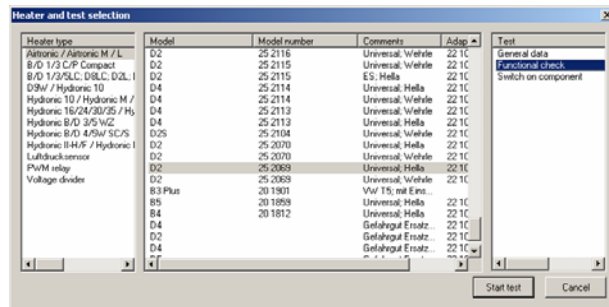
Much of the setup for using the diagnostic software will be the same for all heaters, what follows is merely an example of what is possible using the popular Airtronic D2 (25 2069) model of heater.



Once EDiTH has been opened and the basic setup has been completed, a heater model must be selected. In the top left corner of the screen is a drop down menu called 'heater', hover the mouse pointer over it and click on 'select heater'.



The next popup screen will have three columns; on the left is the type (Airtronic, Hydronic etc), the center shows the the right, the type of tests Select the heater type that heater that you are select the model number popular heater types have automatic detection).



will have three selection for heater 4/5, Hydronic 10/ M, model number, and on that are available. corresponds to the working on. Next, of the heater (some the option for

In our example of the Airtronic D2 model 25 2069) there are three possible tests which may be performed; General data, functional test or switch on component.

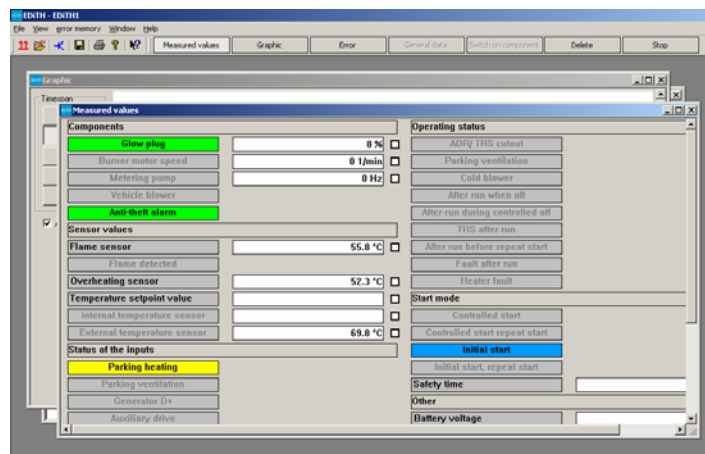
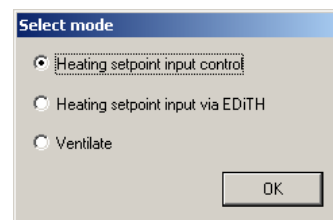
### General data

General data will give details such as number of hours, error codes and other details about the history of the heater's operation. Heater is not operated during a general data test.

### Functional test

A functional test is generally the most widely used test. It allows the technician working on the heater to actually run the heater while receiving and reviewing real-time data regarding the operation of the heater. Like the general data test the functional test also allows for the error codes to be both displayed and cleared.

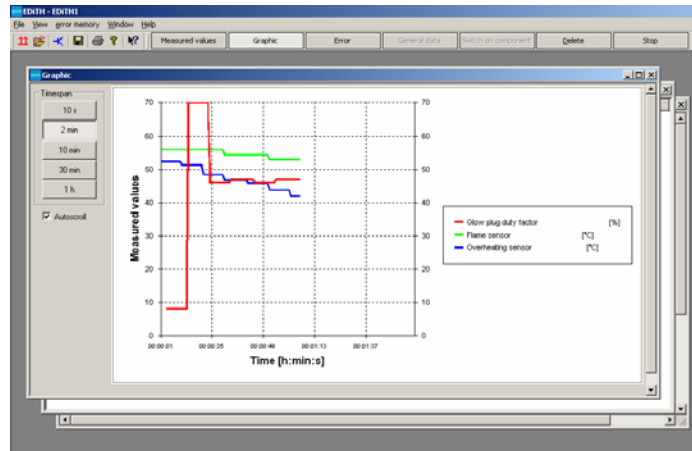
After selecting the correct model type, model number and selecting to start the functional test you will receive a pop up similar to the one shown. The first two options allow for control of setpoint either through the device control (Minicontrol, Digicontrol, Thermostat, etc) or through EDiTH via a text input. The ventilate option will just run the heater in vent or circulate mode. Pick one and select ok.



There are two main screen that are of concern; the Measured Values screen and the Graphic screen.

Any of the sensor values may be viewed on the graphic screen by first clicking the checkbox beside the displayed value.

The graphics screen allows for data to be viewed in chart form in up to one hour increments.

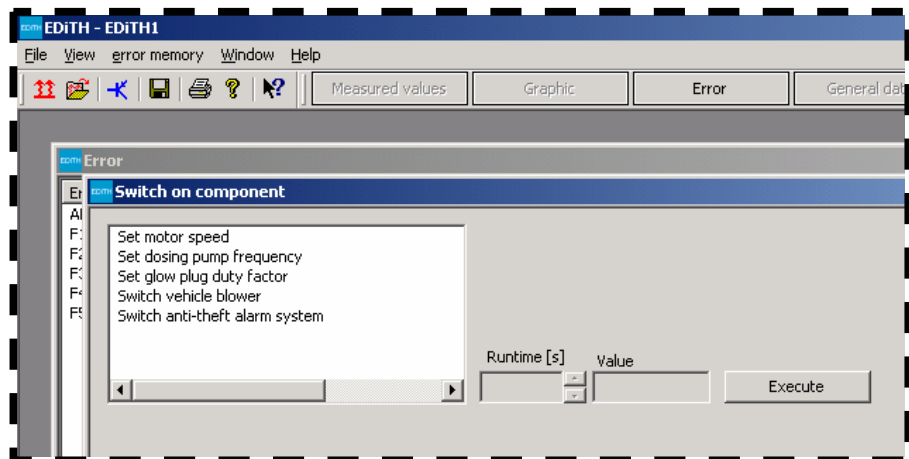


### Switch on Component

This 3<sup>rd</sup> option is useful for testing individual components. Testing of the Blower, Fuel Metering pump and Glowpin may be done using this feature. (Note: heater may not be operated in Heat or Vent mode using this).

As with the other tests available Error Memory may be retrieved and cleared at any time using the Switch on Component test.

The last two options (Switch vehicle blower and Switch anti-theft alarm system) are applicable only if heater's outputs are connected to vehicle's electrical system and normally do not apply to the North American after sales market.



If you have any questions regarding using EDiTH, please contact Espar Technical Services, for further assistance

## Troubleshooting

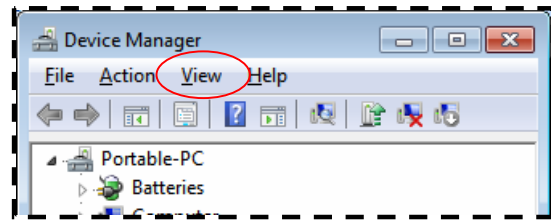
- **During Installation I received a message stating driver was unsuccessfully installed**

Plug the Serial to USB adapter into the computer without the ISO adapter attached

Navigate to Device Manager

Control Panel > Hardware and Sound – Under the Devices and Printers title select “Device Manager”

- Select the view menu and place a mark beside the ‘Show hidden devices’ option
- Is there any Icons in the section marked ‘Ports’ with a yellow ‘!’ mark beside them. If there is, the driver for that device needs to be updated. Most Serial to USB adapters can operate on the driver located at this link:



[http://www.prolific.com.tw/support/files/%5CICIO%20Cable%5CPL-2303%5CDrivers%20-%20Generic%5CWindows%5Callnone%5CPL2303\\_Prolific\\_DriverInstaller\\_v110.zip](http://www.prolific.com.tw/support/files/%5CICIO%20Cable%5CPL-2303%5CDrivers%20-%20Generic%5CWindows%5Callnone%5CPL2303_Prolific_DriverInstaller_v110.zip)

-If you are using the adapter that came with ISO adapter (sold through Espar) you can find the updated driver at:

[www.moxa.com/drivers/uport/u1130/V1.6/driv\\_win\\_uport1p\\_v1.6\\_build\\_09062913\\_whql.zip](http://www.moxa.com/drivers/uport/u1130/V1.6/driv_win_uport1p_v1.6_build_09062913_whql.zip)

-Follow the steps when prompted to install the driver.

-Unplug the Serial to USB adapter

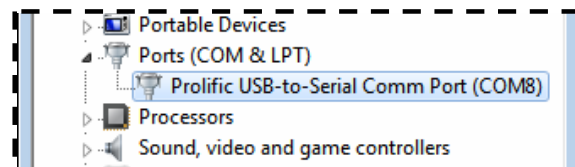
-Reboot computer

-Plug Serial to USB adapter back into computer

-Navigate to Device manager again

-Ensure that the Computer has recognized the adapter and does not have a error (error will be indicated by the presence of a yellow ‘!’ beside the device)

-Continue with normal installation of EDiTH



- **When I plug the Serial to USB device into the computer I don’t get another COM port.**

-Did the driver install properly?

Navigate to Device Manager and ensure there are no “!” marks beside any of the items listed under ‘Ports (COM &LPT)’

-Follow the steps from the previous section to ensure driver for Serial to USB installed correctly.

- **I am having another problem that is not listed here.**

-**If the issue is in regards to the EDiTH software package**

Please contact Espar’s Technical Dept at 1-800-387-4800

-**If the issue is in regards to the Serial to USB adapter or Windows 7**

Please contact your computer specialist or system administrator.